

## *Wintertime Friends by Pam Kellogg*

### INSTRUCTIONS

Cross stitch this design over two threads on 25-count Lugana. Each square on the graph equals two fabric threads. **Note:** the icicle border is only partially graphed. Continue stitching the pattern shown in each corner with the Japan #1 001J Silver, stitching along the entire length of each side. Refer to the color key for other stitching instructions.

### COLOR KEY

For cross stitches:

**DMC** (2 strands)

- ◻ 1 White
- 310 Black
- ♡ 317 Pewter Grey
- || 318 Lt Steel Grey
- ↙ 413 Dk Pewter Grey
- ↘ 414 Dk Steel Grey
- = 415 Pearl Grey
- ✕ 500 Vy Dk Blue Green
- ⊕ 501 Dk Blue Green
- < 502 Blue Green
- ? 503 Md Blue Green
- \$ 504 Lt Blue Green
- ↖ 762 Vy Lt Pearl Grey
- ♥ 3685 Dk Mauve
- ⊗ 3687 Mauve
- 4 3688 Md Mauve
- ↓ 3689 Lt Mauve
- 2 3799 Vy Dk Pewter Grey

3 3803 Md Dk Mauve

★ 3813 Lt Blue Green

**KREINIK** (use as is, straight from the reel, do not ply)

└ Fine (#8) Braid 101 Platinum

● Ombre 3200 Solid Pearl

▽ Very Fine (#4) Braid 001HL Silver Hi Lustre

⋈ Very Fine (#4) Braid 032 Pearl

Blend 2 strands floss with 2 strands Kreinik Blending Filament in cross stitches:

┘ DMC 1 + 032 Blending Filament

≡ DMC 762 + 032 Blending Filament

◇ DMC 415 + 032 Blending Filament

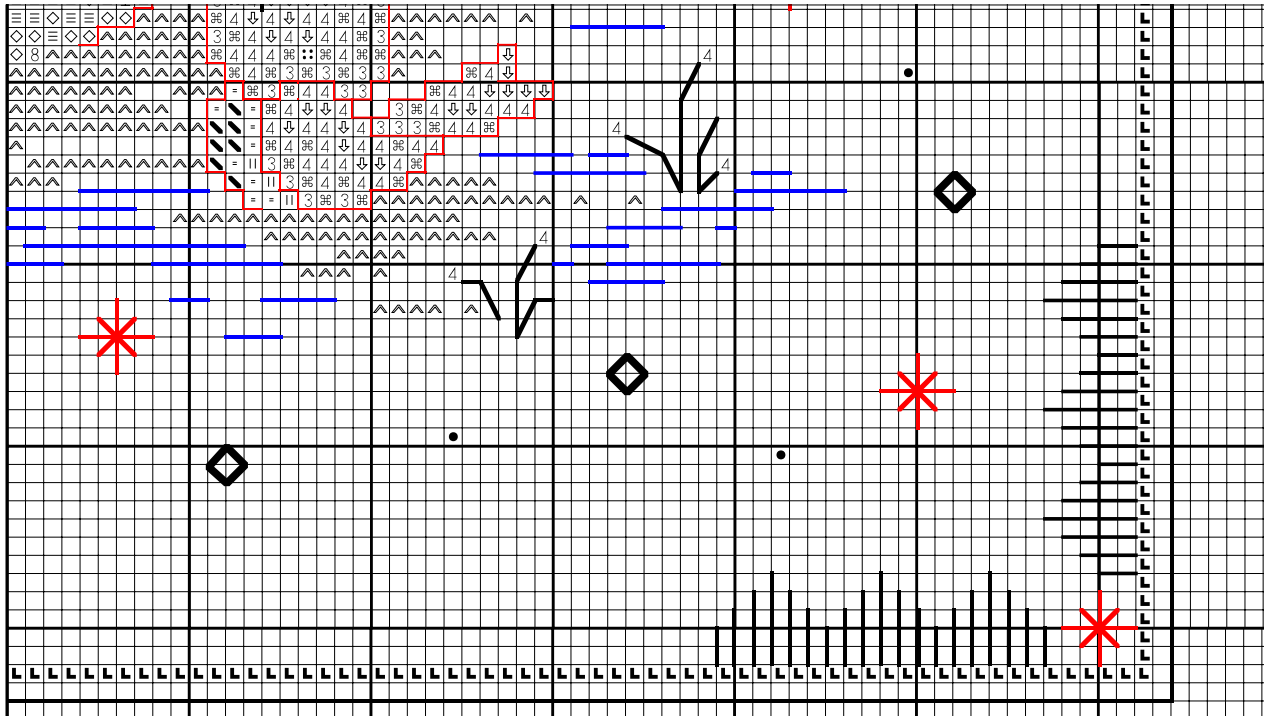
8 DMC 318 + 032 Blending Filament

○ DMC 317 + 032 Blending Filament

▣ DMC 414 + 032 Blending Filament

French Knots on eyes and buttons:

● DMC 1 White (1 strand/2 wraps)



For tips on stitching with Blending Filament or any of the metallic threads, visit the Threads pages on [www.kreinik.com](http://www.kreinik.com) or call our Consumer Info Line at 1-800-537-2166, or email us at [kreinikl@kreinik.com](mailto:kreinikl@kreinik.com).

### Backstitching:

thin black lines: DMC 310 (1 strand): Snowman's eyes, nose, mouth, buttons, hat and bird's eyes. Bird's beak use two strands.

thin black lines: DMC 413 (1 strand) for weeds

thin red lines: DMC 3799 (1 strand) all other

black lines in border: Japan #1 001J Silver (1 strand) in straight stitch

black line outside row of cross stitch in the border: Japan #1 001J Silver (1 strand)

in backstitch thicker red lines in star shapes: Very Fine (#4) Braid 001 Silver (1 strand) in Algerian Eyelet stitch

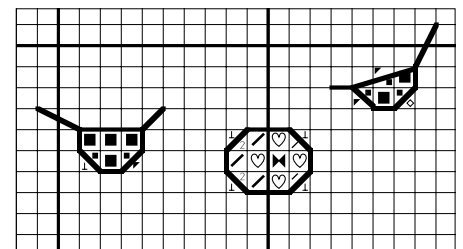
horizontal blue lines beneath and around snowman: Fine (#8) Braid in 100 White

thick black lines in diamond shapes: Japan #1 001J Silver (1 strand) in backstitch

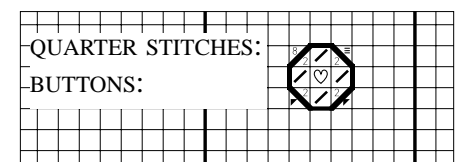
### Quarter Stitches:

The snowman's eyes and buttons require quarter stitches, which are not charted on the main graph. Refer to the charts here for details of those areas.

- DMC 310 (2 strands)
- ✓ DMC 413 (2 strands)
- 2 DMC 3799 (2 strands)
- ⊥ DMC 1 (2 strands) + 032 Kreinik Blending Filament (2 strands)
- ≡ DMC 762 (2 strands) + 032 Blending Filament (2 strands)
- ◇ DMC 415 (2 strands) + 032 Blending Filament (2 strands)
- 8 DMC 318 (2 strands) + 032 Blending Filament (2 strands)
- ▀ DMC 414 (2 strands) + 032 Blending Filament (2 strands)



QUARTER STITCHES: EYES & NOSE



QUARTER STITCHES:  
BUTTONS: